

# Dandelion

A fun and easy sewing pattern by Michelle Goggins



MG Doodle Studio 

A happy place of sewing and drawing

<https://www.mgdoodlestudio.com>

Please read through all the instructions before beginning this project.

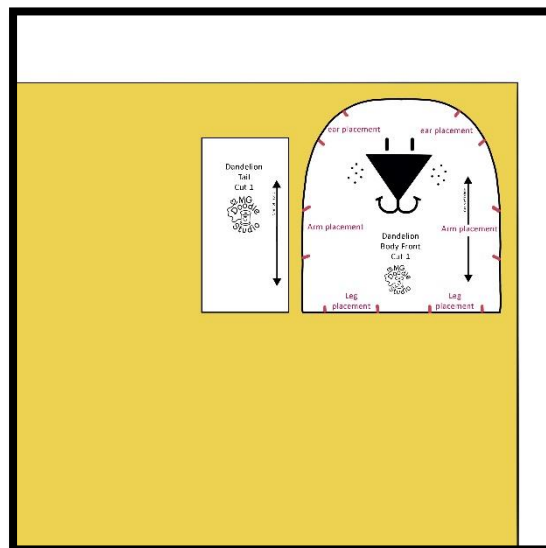
### Supplies needed:

- A piece of fabric 18” long by 12” tall
- A piece of batting 11 X 11 inches
- A scrap of black fabric for the nose
- A scrap of double-sided fusible web for the nose
- Fabric markers – black and pink
- Fabric pens or pencil
- Yarn for the mane (approx. 16 yards)
- Stuffing
- Thread

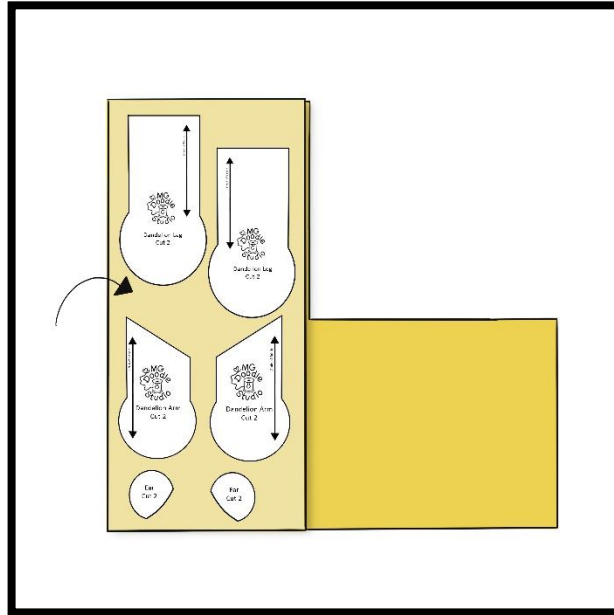
### How to sew:

Print the pattern pieces and cut them out.

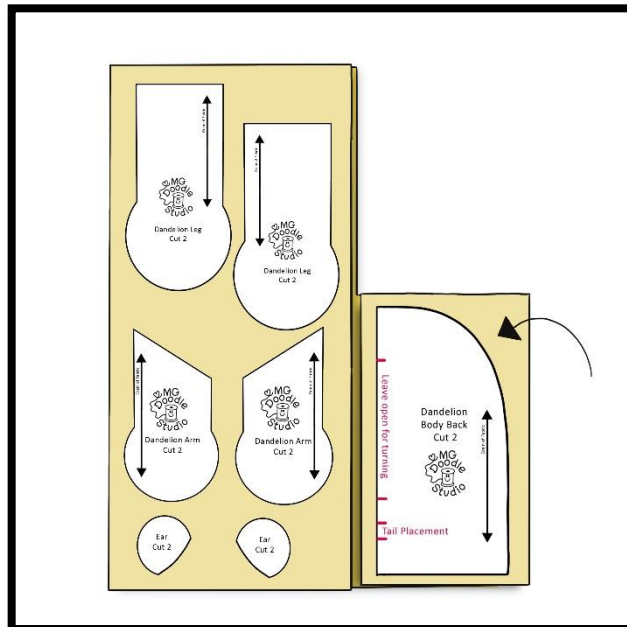
Pin the lion body front and tail pattern pieces onto the right side of the fabric in the upper right corner and cut them out.



Fold the left side of the fabric with right sides together, as shown. Pin the leg, arm, and ear pattern pieces to the fabric.

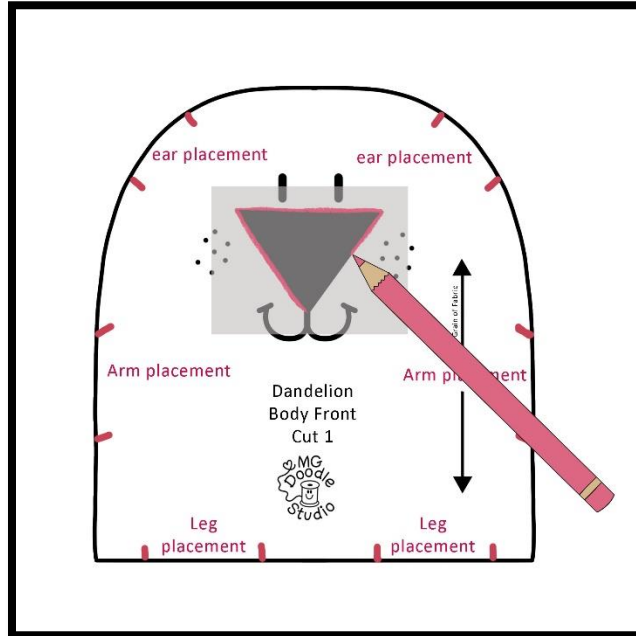


Fold the right side of the fabric with right sides together, as shown. Pin the body back pattern piece to the fabric. Cut out all the pieces.



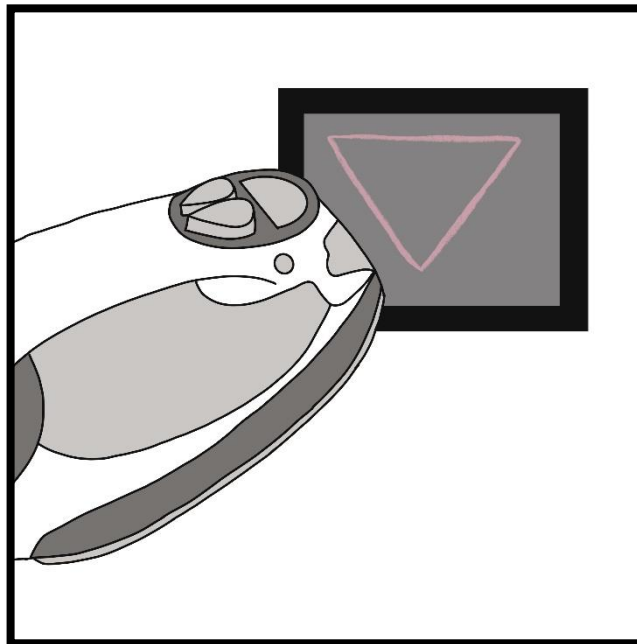
Use the Body Front pattern piece to trace the nose onto a piece of double-sided fusible web.

Peel the paper from the untraced side of the fusible web.



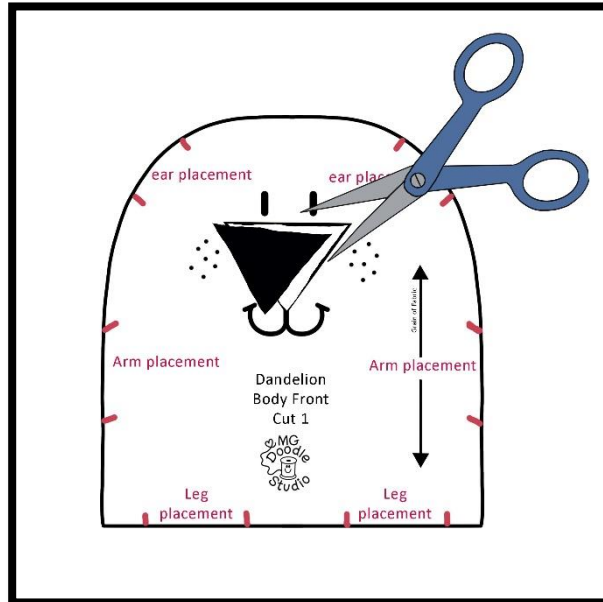
Please follow the manufacturer's instructions when working with fusible products.

Fuse the traced piece to the wrong side of a scrap of fabric. Cut it out and remove the paper backing.

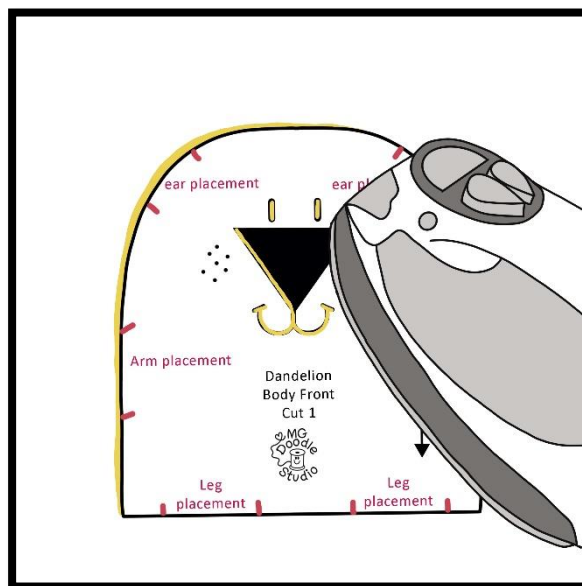


Tip: Use a pressing cloth to protect your iron from any stray fusible.

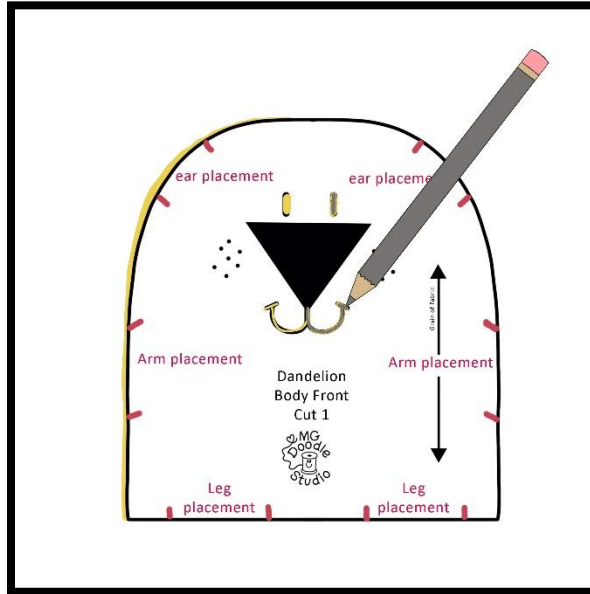
Carefully cut out the nose from the paper pattern piece. Cut along the mouth and eyes as well.



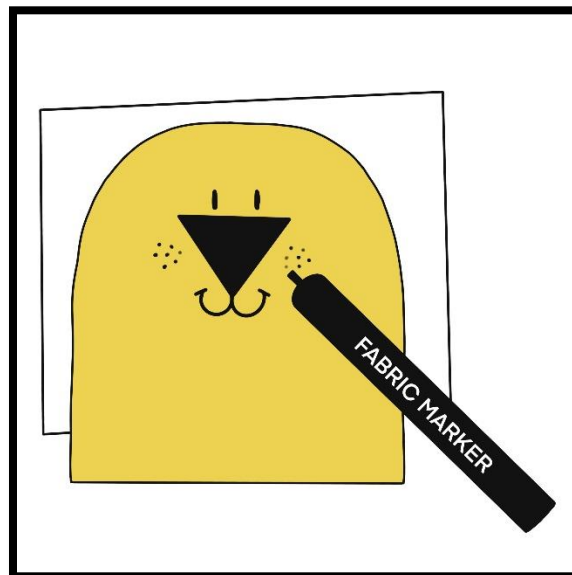
Use the body front pattern piece as a template to place the nose onto the right side of the body front fabric piece and fuse it in place.



Use the body front pattern piece as a template to draw the mouth and eyes onto the fabric with a fabric pencil or pen.



Draw over the pencil marks with a permanent fabric marker to complete the eyes and mouth. Also, draw a few free-hand dots on each side of the nose. *I'd recommend practicing on a piece of scrap fabric if you feel nervous about this step.*

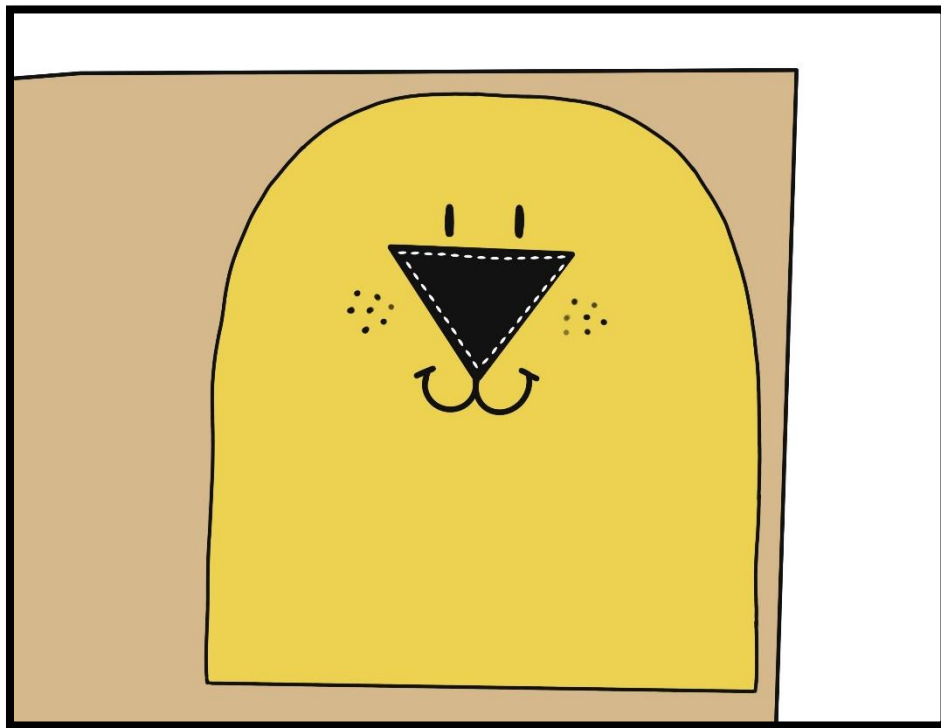


Tip: Place a piece of paper under the fabric to prevent the bleed-through from marking your table.

Pin the body front to the upper right-hand corner of the 11 X 11 piece of batting. (The lion's face will face upward)  
Use an open toe presser foot and sew around the nose twice with a straight stitch.

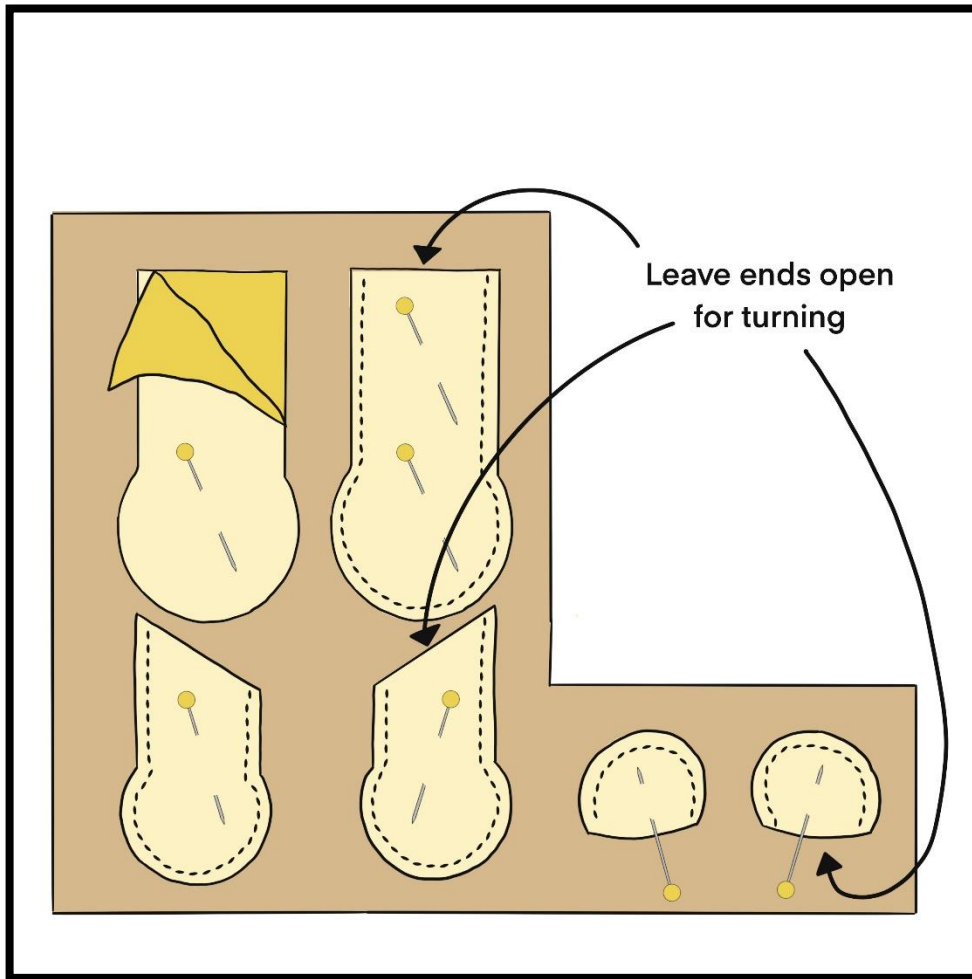
You can use matching thread or contrasting thread, depending on your preferences.

*Speaking of preferences, feel free to change the face however you'd like! If you'd rather use embroidery or other methods, this is a good place to get creative!*



Cut out the body front and set it aside.

Place the ears, arms, and legs, with right sides together, onto the batting. Sew around each arm, leg, and ear with a  $\frac{1}{4}$  inch seam allowance. Backstitch at the beginning and end of each seam. Leave the ends open for turning.



Cut out the pieces.

Turn the pieces right side out. (See page 9 for some turning tips.)

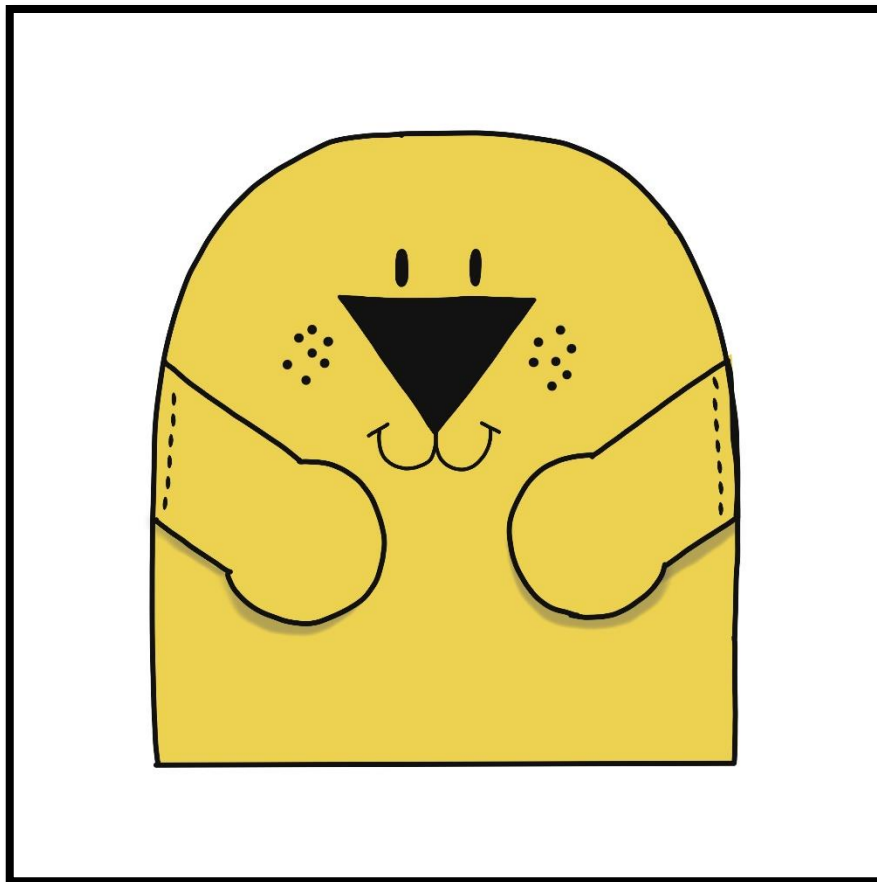
Push a little stuffing into the bottoms of the arms and legs. Just use enough stuffing to poof them up a little bit, don't fill them full.



A few tips for turning the pieces right side out:

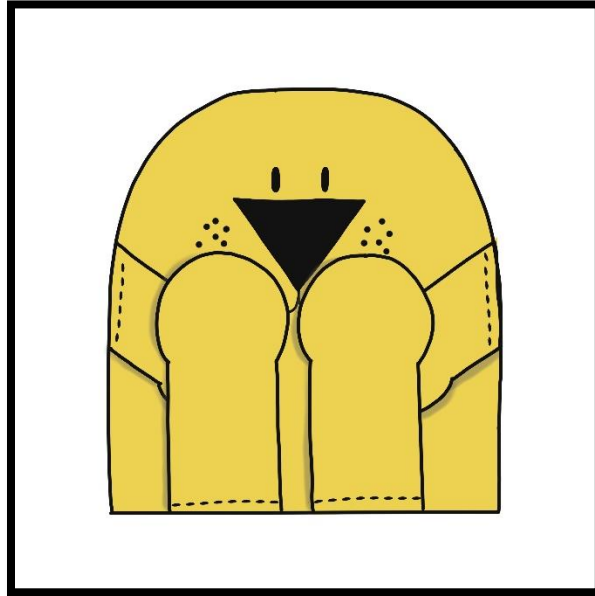
- Trim close to the stitching line.
- Use a turning tool.
- Turn between the two fabric pieces – not between the fabric and batting.
- Use a point turning tool, chopstick, or skewer to get the tight corners and edges turned all the way out.
- Press well after turning

Use the front pattern piece as a guide to place the arms onto the body front. Baste them with a  $\frac{1}{4}$  inch seam allowance.

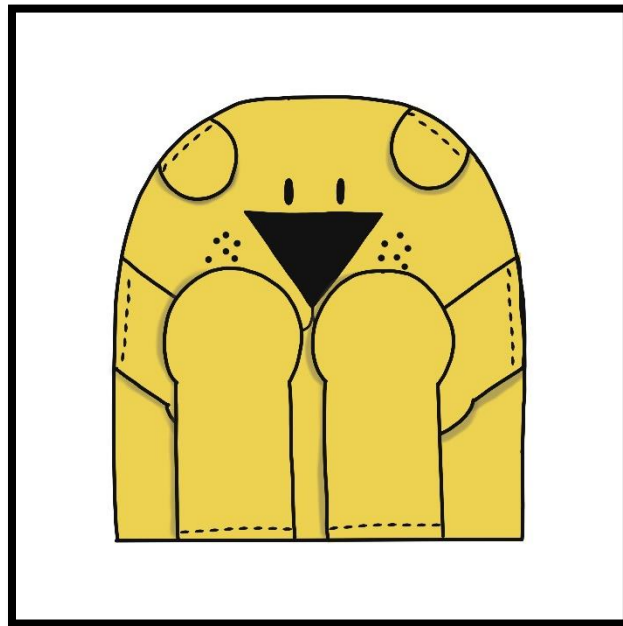


Note: The arms will angle downward.

Use the body front pattern piece as a guide to place the legs onto the body front. Baste them with a  $\frac{1}{4}$  inch seam allowance.



Use the body front pattern piece as a guide to place the ears onto the body front. Baste them with a  $\frac{1}{4}$  inch seam allowance.

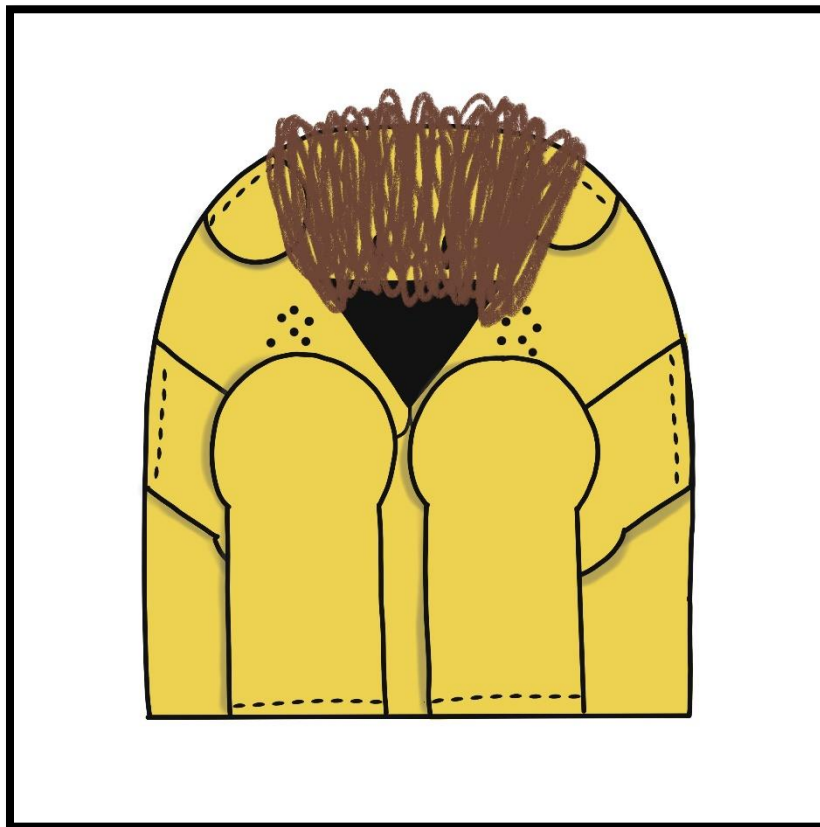


Wrap some yarn around your hand about 20 times. (Approx. 5 yards of yarn)

Place the wrapped-up yarn in the center of the lion's head, as shown below. You want some yarn to be outside the fabric – don't try to line it up evenly with the fabric.

Baste the yarn to the fabric with a  $\frac{1}{4}$  inch seam allowance.

- Sew slowly. Stop every few stitches, raise the presser foot, and push the yarn under the presser foot with a skewer or tweezers.
- Keep your fingers out of the way!

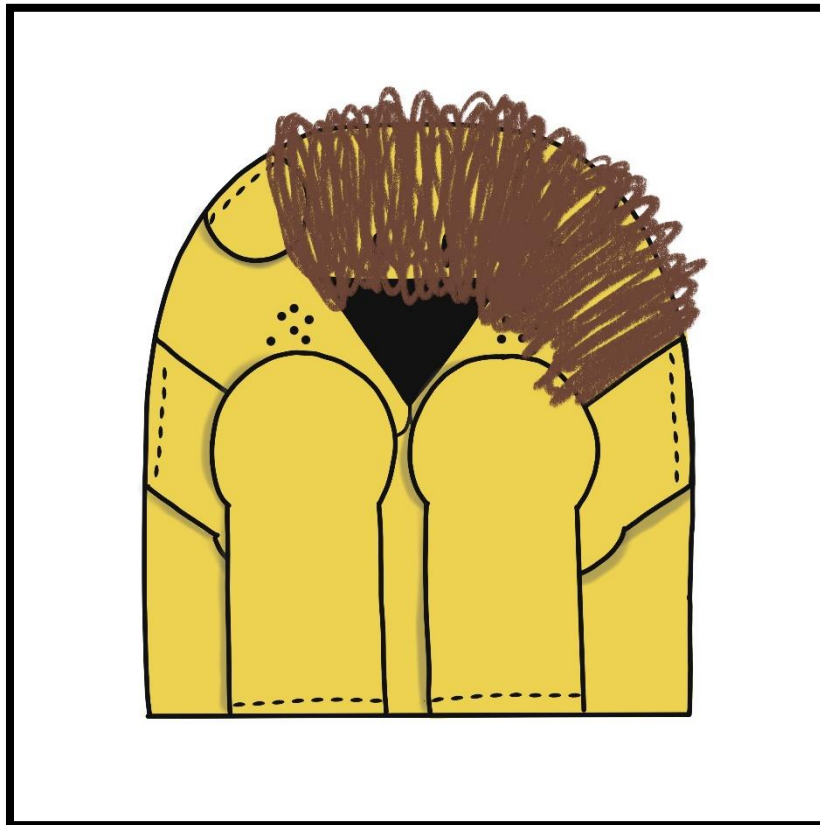


*Note: This is a messy, imperfect process. Don't worry about catching every strand of yarn. Don't worry about getting the yarn evenly distributed or lined up. You'll be giving the lion a hair cut later on!*

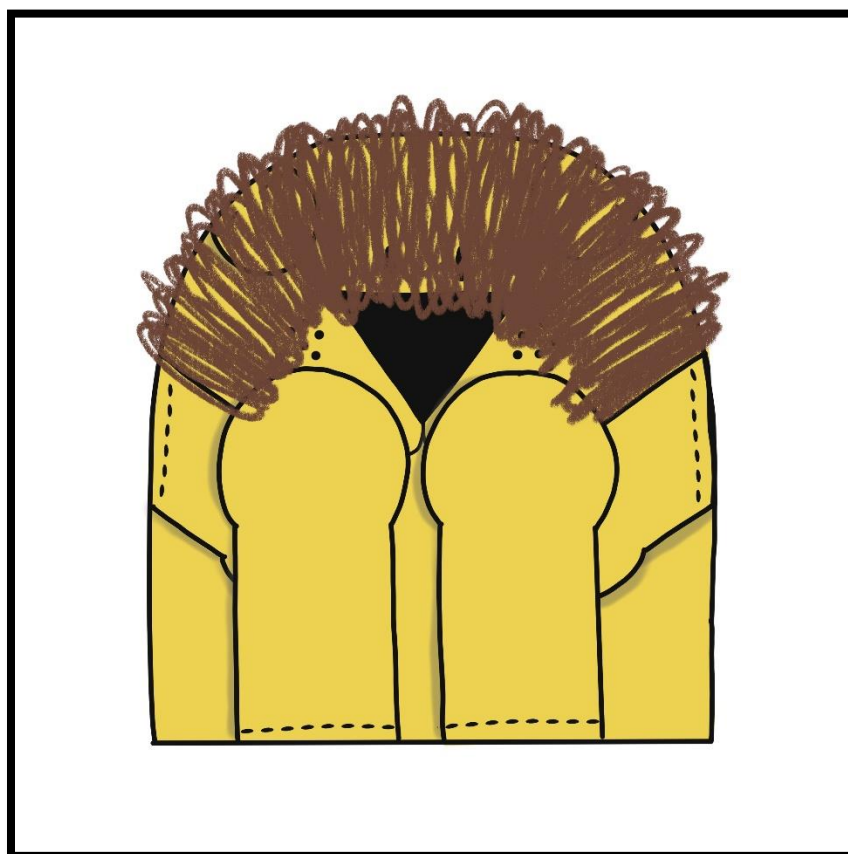
Again, wrap about 5 yards of yarn around your hand, approx. 20 times.

Place the yarn onto the body front between the previous yarn and an arm.

Again, slowly and carefully stitch in place with a ¼ inch seam allowance.

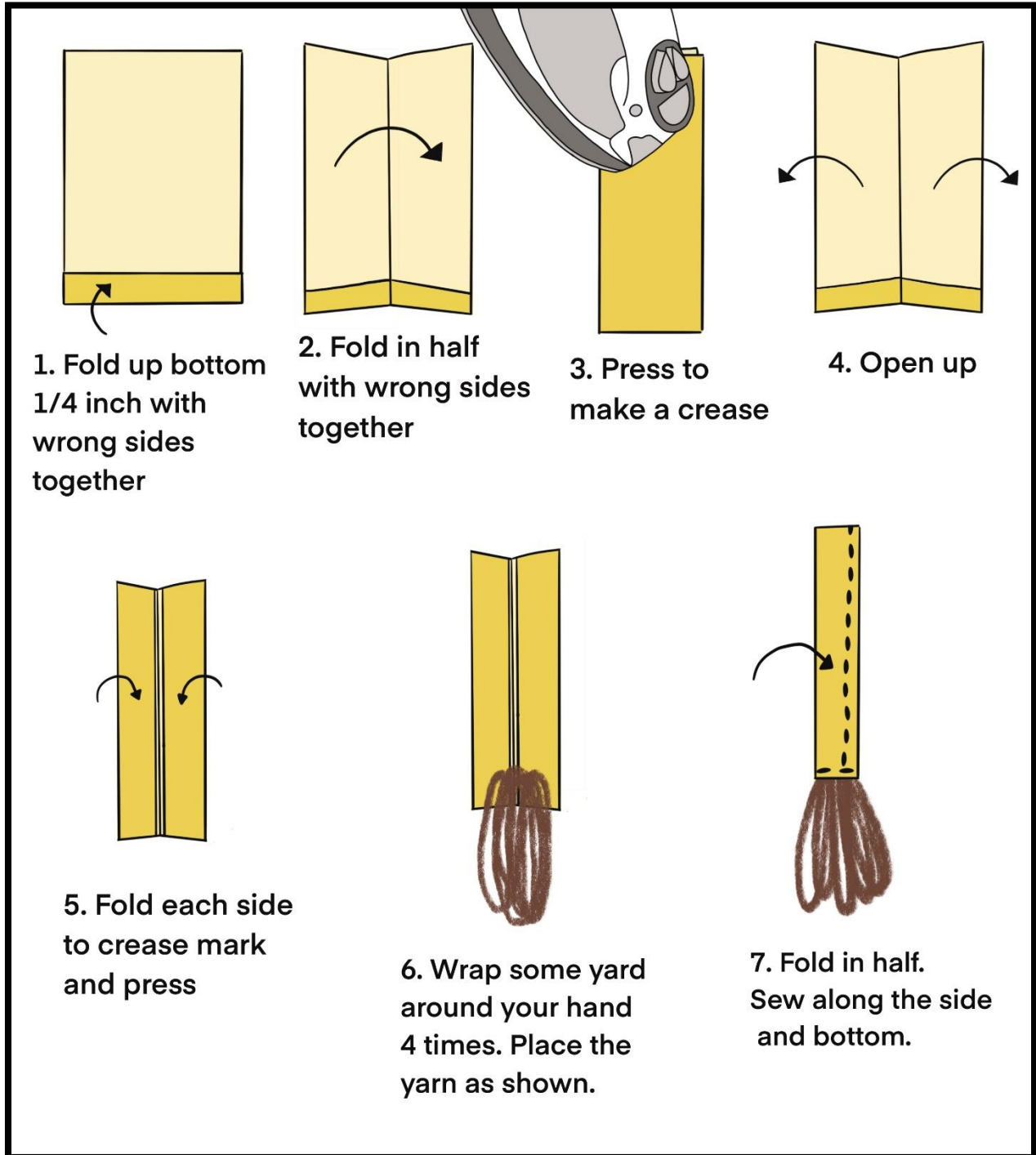


Repeat the process for the other side of the lion's head.

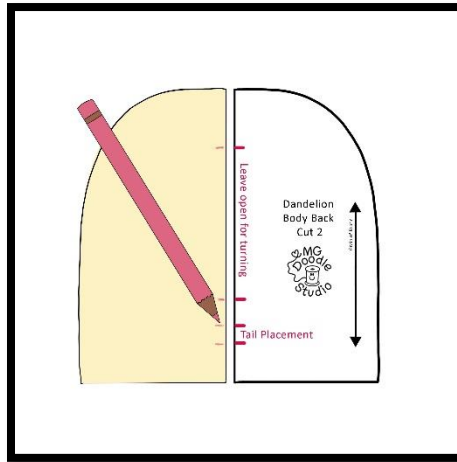


Set this piece aside.

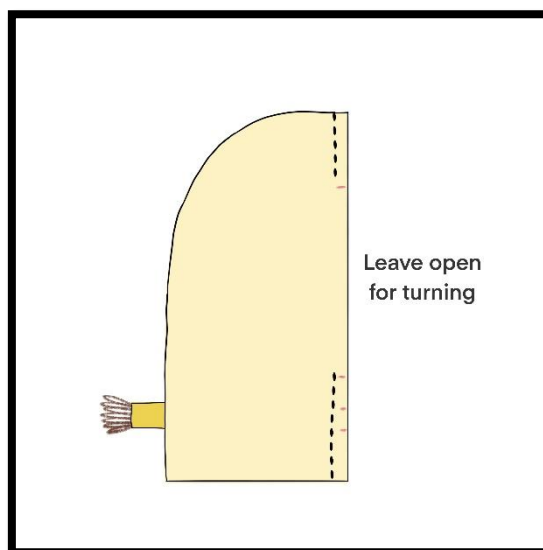
Get the Dandelion tail fabric piece and a bit of yarn to make the lion's tail. Place the fabric on your table with the right side facing down and follow these instructions.



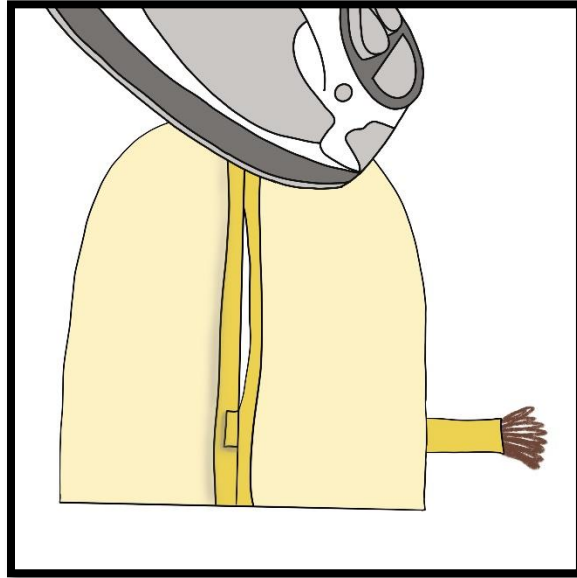
Place the two body back fabric pieces with right sides together. Use the body back pattern piece as a guide to mark the tail placement and opening guidelines onto the fabric with a fabric pencil or pen.



Insert the tail between the two body back fabric pieces at the markings. Sew the body back together with a  $\frac{1}{4}$  inch seam allowance. Leave the indicated space open for turning. Backstitch at the beginning and end of each seam.

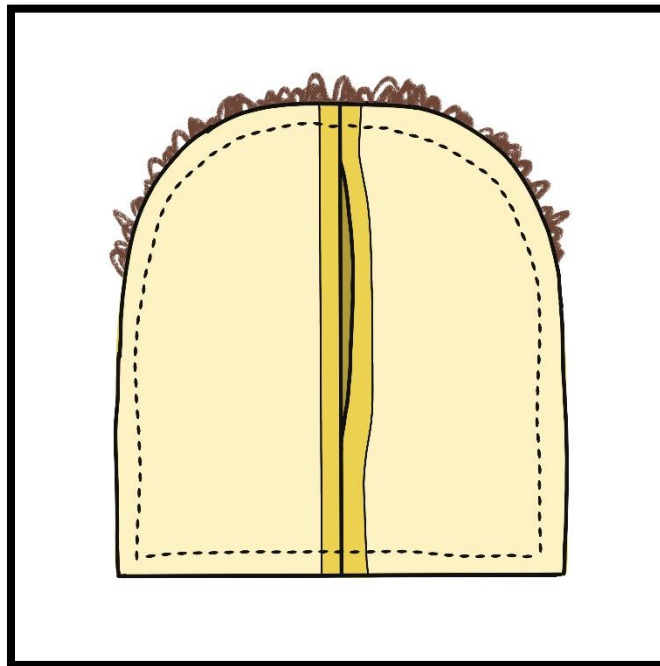


Open the body back and press the seam open.



Place the body front and body back pieces with right sides together.

Sew all the way around the outside with a 3/8-inch (1 cm) seam allowance.



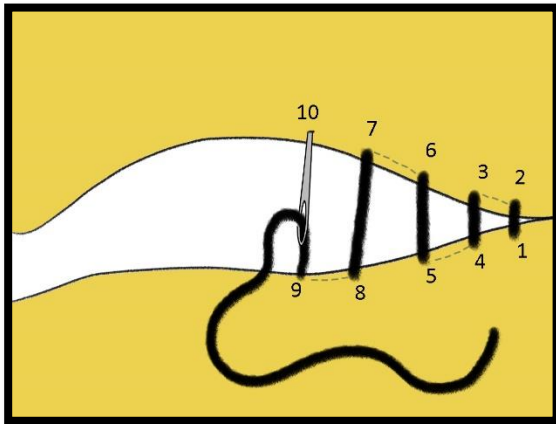
Note: The arms, legs, ears, tail, and mane are all sandwiched between the body front and body back pieces.



Trim the bottom corners.

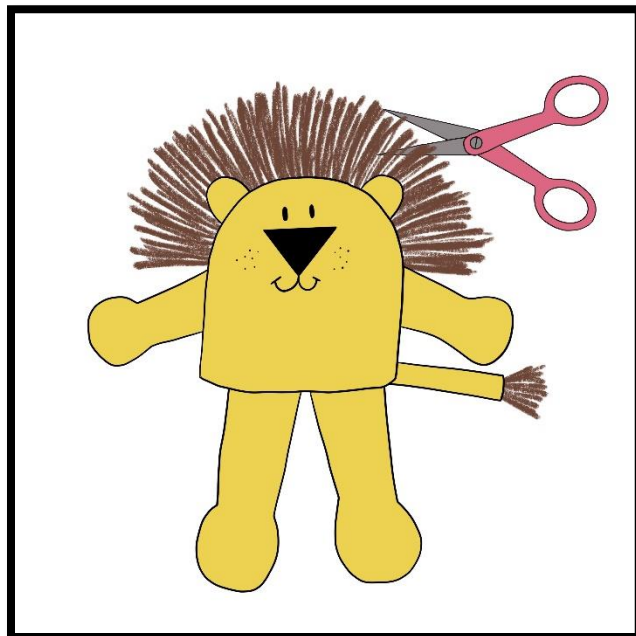
Turn the lion right side out through the opening in the back.

Fill the lion with the stuffing of your choice and sew the back opening closed with a ladder stitch, using matching thread.



Ladder stitch: Thread a needle and tie a knot in one end. Bring the needle up from the wrong wide of the fabric at #1. Go back down through the fabric at #2. Come back up at #3, back down through #4, etc. The dashed lines indicate that the thread is on the wrong side of the fabric. When the gap is closed, pull the stitch tight and tie a knot.

Give the lion a haircut. Cut between each of the loops of yarn on the mane and tail. If you like how that looks, stop there. You can trim individual strands of yarn that are too long but don't get hung up on getting it all even.

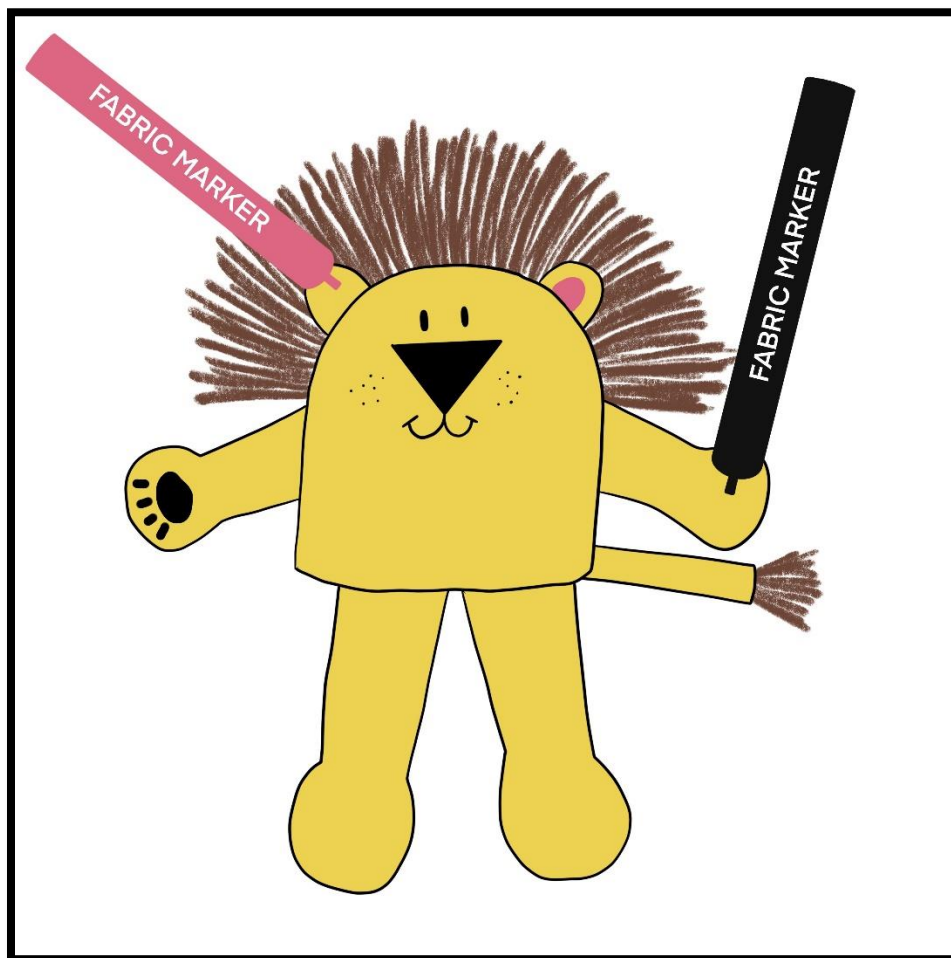


Use a black fabric marker to draw the paws on the front of the arms and on the back of the legs.

Draw a large circle for the paw pads, then 4 small ovals for the toes. I'd recommend practicing on a scrap of fabric first.

Draw the inner ear with a pink fabric marker.

These little details add quirky cuteness to your lion.



Thank you for purchasing this PDF sewing pattern!

The author, Michelle Goggins, grants a cottage industry use license for this pattern. That means you can sew these items for yourself, give them as gifts, or sell them in your online shops or at craft sales.

The pattern, illustrations, and photos are ©Michelle Goggins with all rights reserved, so please don't sell them, give them away, or take credit for them.

Michelle Goggins is not responsible for any injury or damage that could arise from making this pattern.

Wishing you happy sewing!

For more information and free sewing patterns, please visit

<https://www.mgdoodlestudio.com>

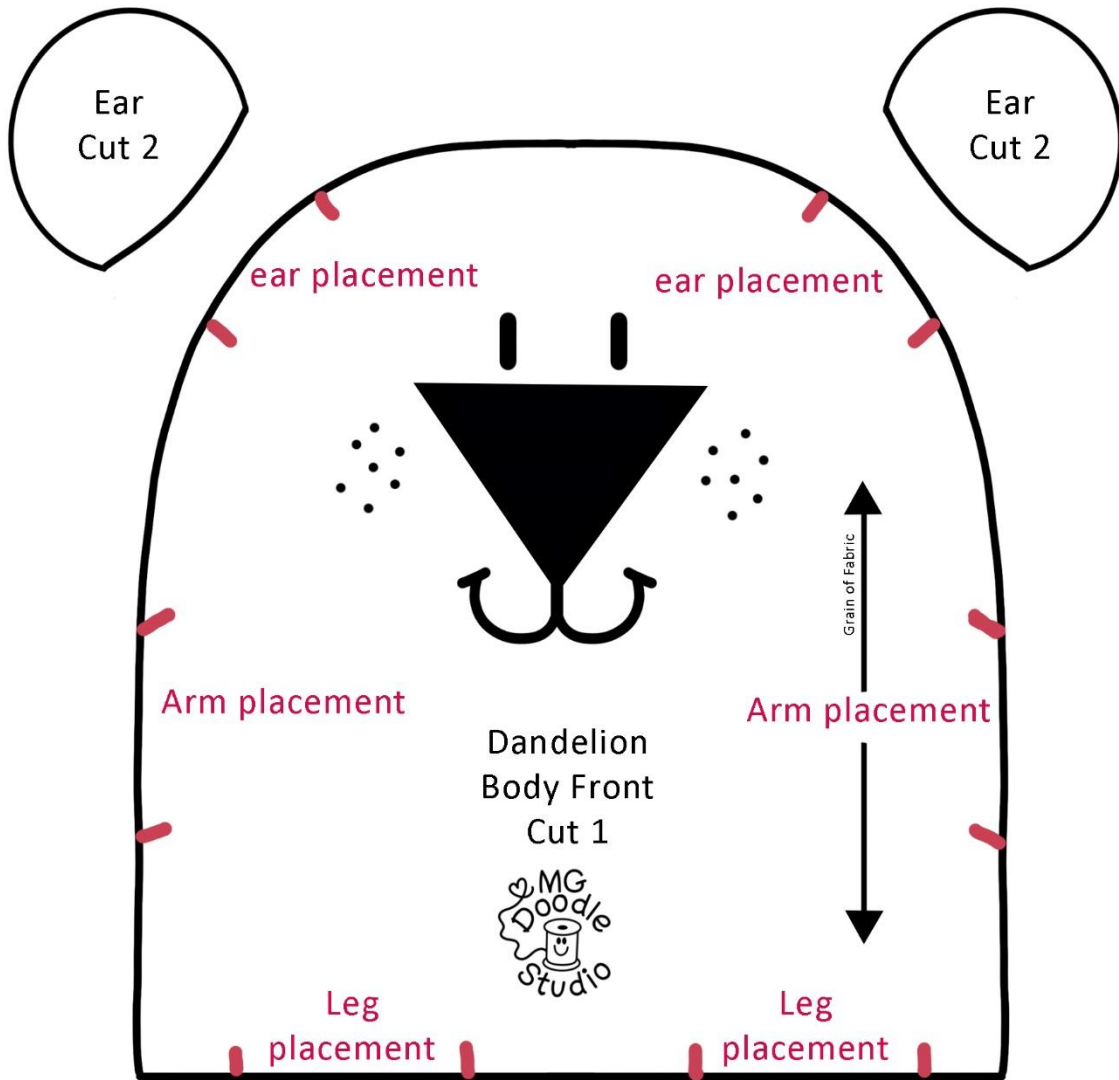


My sewing philosophy:

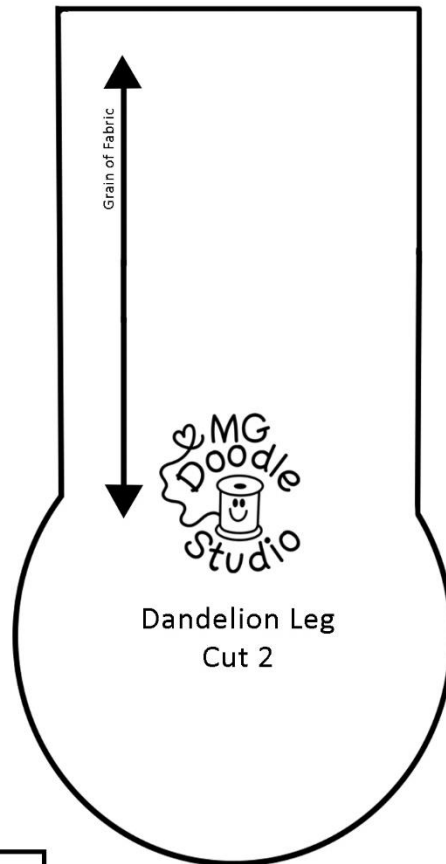
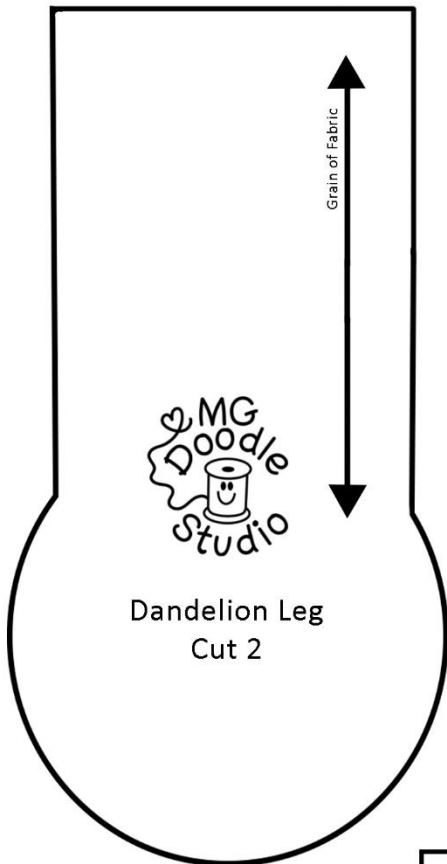
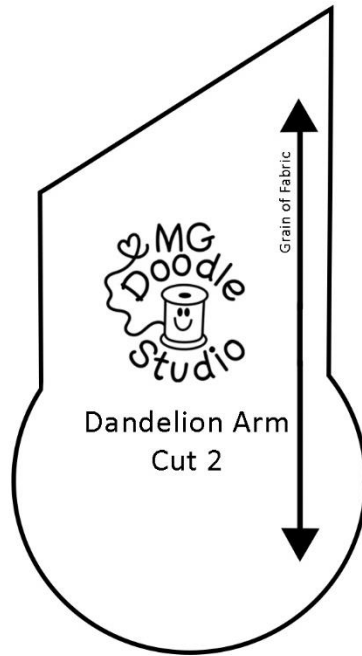
A pattern is just a guide, and sewists should feel free to make any modifications they desire.

There's nothing more delightful than a quirky, hand-sewn character that wasn't made in a factory.

Sewing is meant to be fun. Do what makes you happy!



This box should measure 1 X 1 inches.



This box  
should  
measure  
1 X 1 inches.

This box  
should  
measure  
1 X 1 inches.

