

This Little Piggy

A fun and easy sewing pattern by Michelle Goggins



MG Doodle Studio 

A happy place of sewing and drawing

<https://www.mgdoodlestudio.com>

Please read through all the instructions before beginning this project.

Supplies needed:

- A piece of fabric 18 X 24 inches - a fat quarter will work.
- A piece of batting 13 X 16 inches
- A scrap of fabric for the inner ears and snout
- A scrap of double-sided fusible web for ears and snout
- Black fabric marker
- Stuffing
- Thread

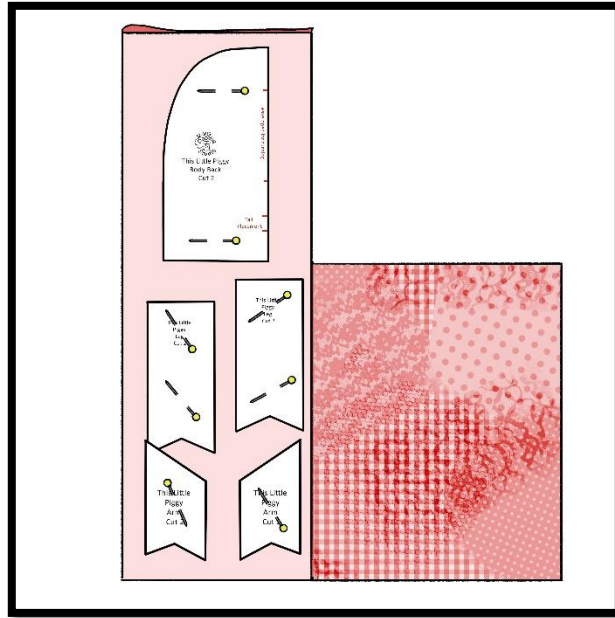
How to sew:

Print the pattern pieces and cut them out.

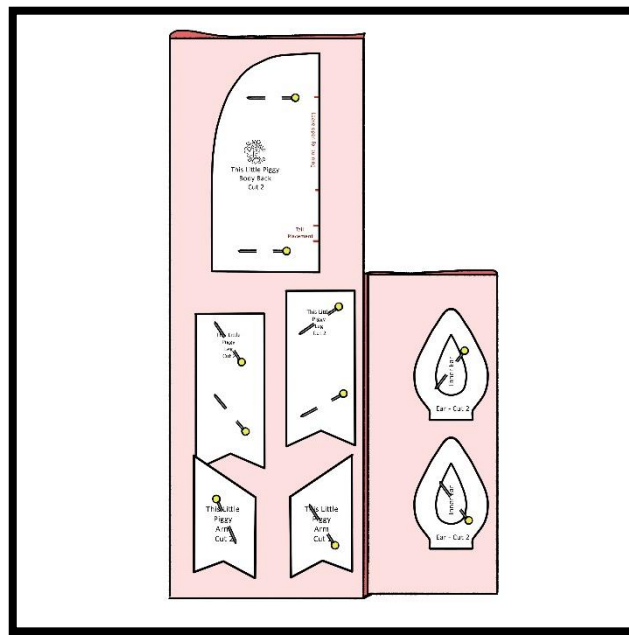
Pin the pig body front pattern piece onto the fabric in the upper right corner and cut it out.



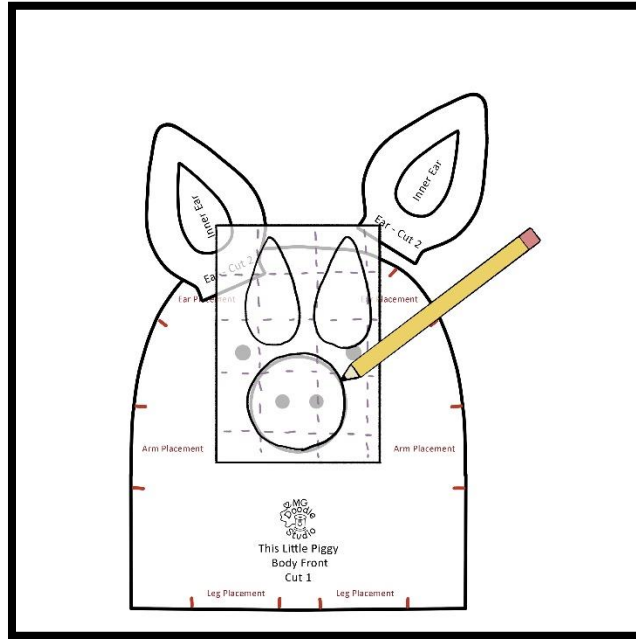
Fold the left side of the fabric with right sides together, as shown. Pin the body back, leg, and arm pattern pieces to the fabric.



Fold the right side of the fabric with right sides together, as shown. Pin the ear pattern pieces to the fabric. Cut out all the pieces.

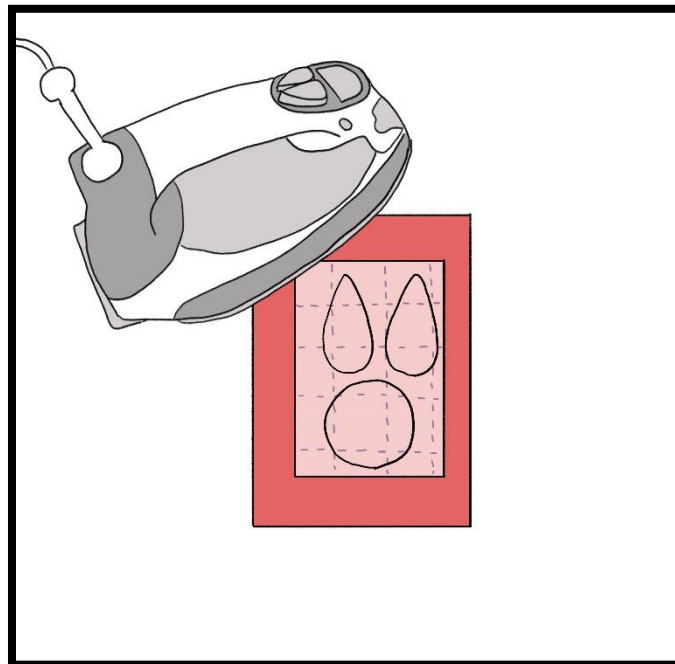


Use the patterns to trace the snout and inner ears onto a piece of double-sided fusible web.



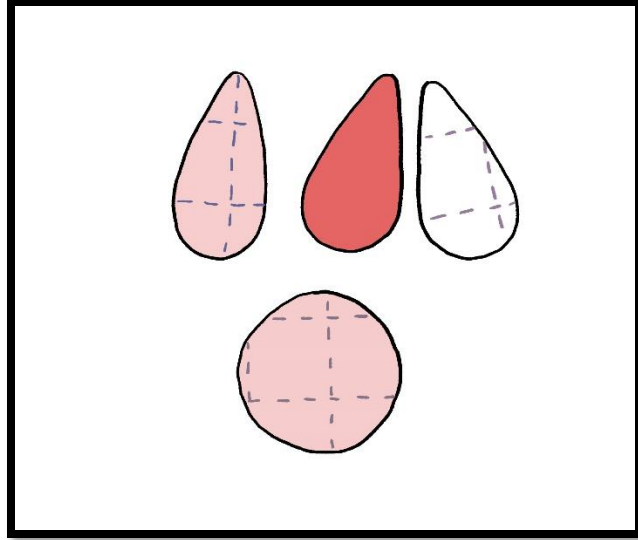
Please follow the manufacturer's instructions when working with fusible products.

Peel the paper from the untraced side. Fuse the traced piece to the wrong side of a scrap of fabric.

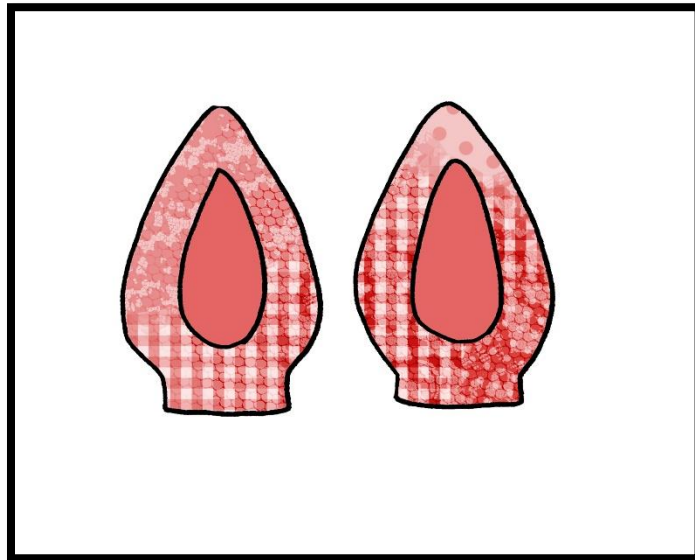


Tip: Use a pressing cloth to protect your iron from any stray fusible.

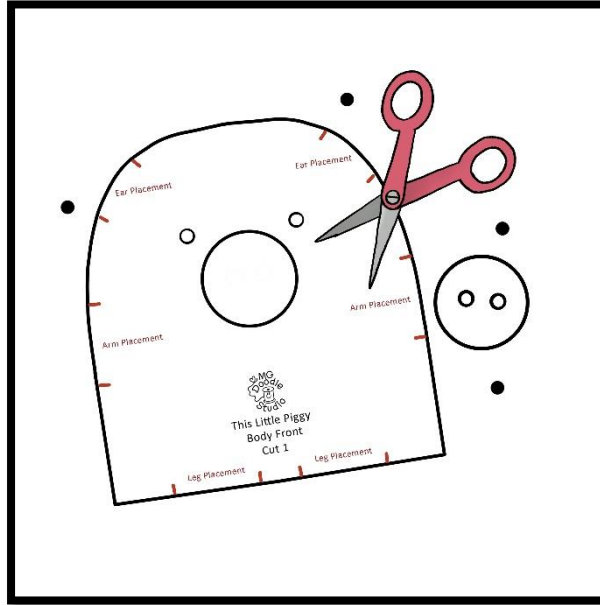
Cut out the snout and inner ears. Remove the paper backing.



Fuse the inner ears to the right sides of the ears.

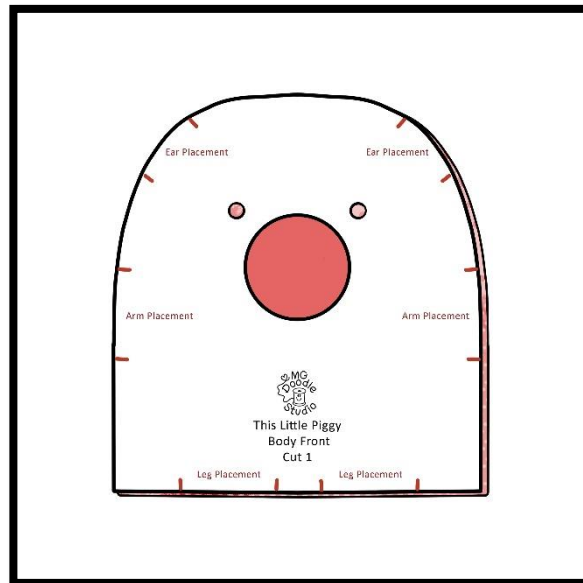


Carefully cut out the snout, nostrils, and eyes from the body front pattern piece.

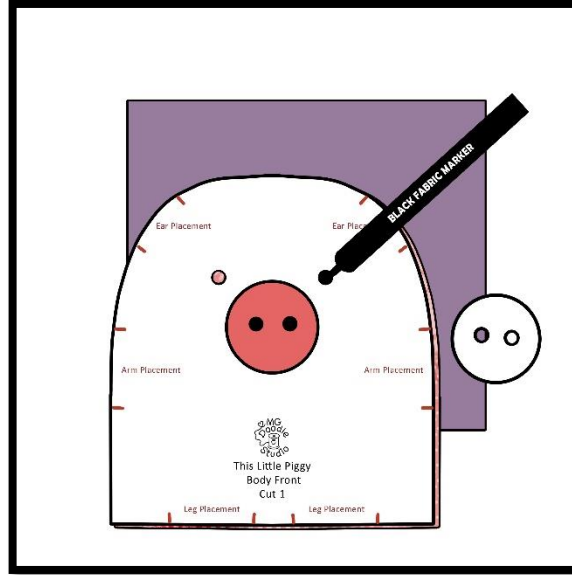


Tip: Use a hole punch for the eyes and nostrils.

Use the pattern piece as a template to place the snout on the body front, and fuse it in place.

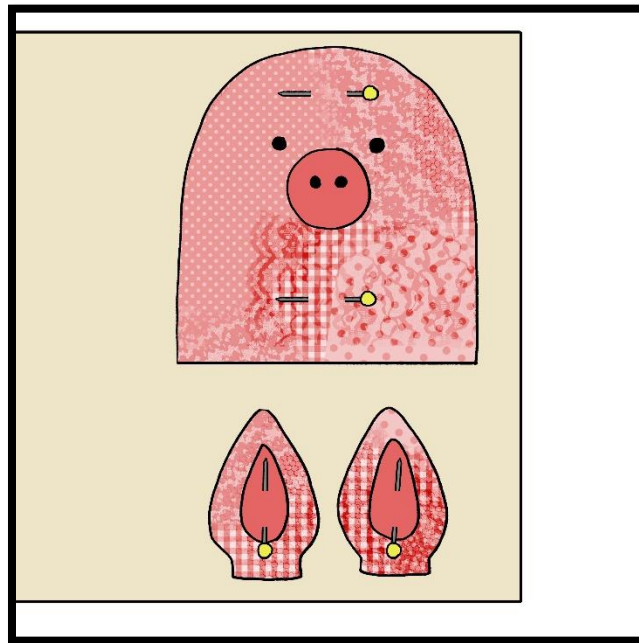


Use the body front and snout pattern pieces as templates to draw the eyes and nostrils with a black fabric marker.

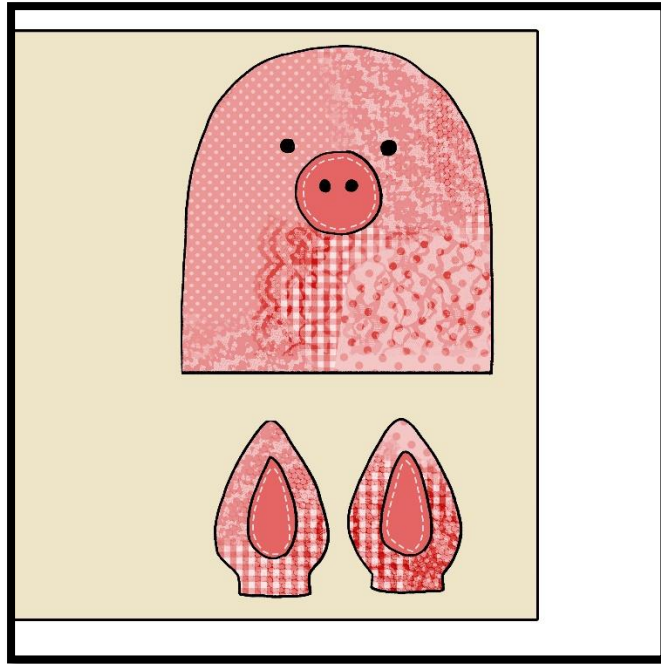


Tip: Place a piece of paper under the fabric to prevent the bleed-through from marking your table.

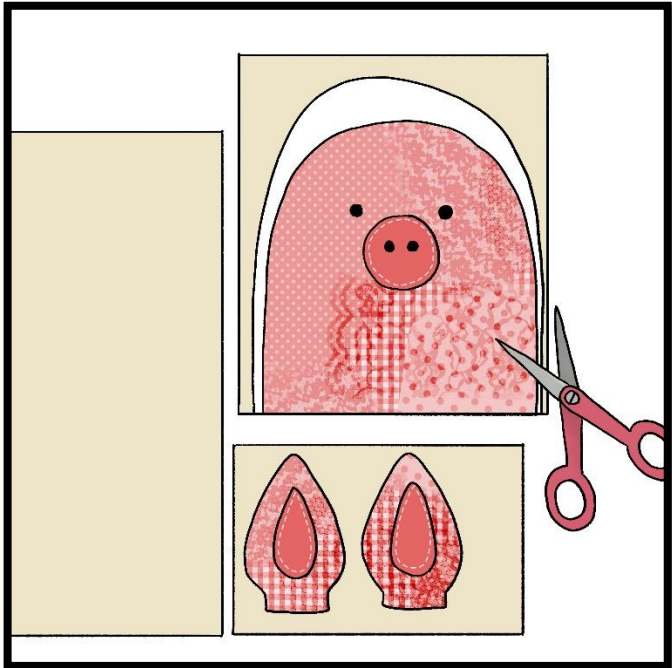
Pin the body front and ears onto the 13 X 16 piece of batting.



Use an open toe presser foot and sew around the snout and inner ears twice with a straight stitch.

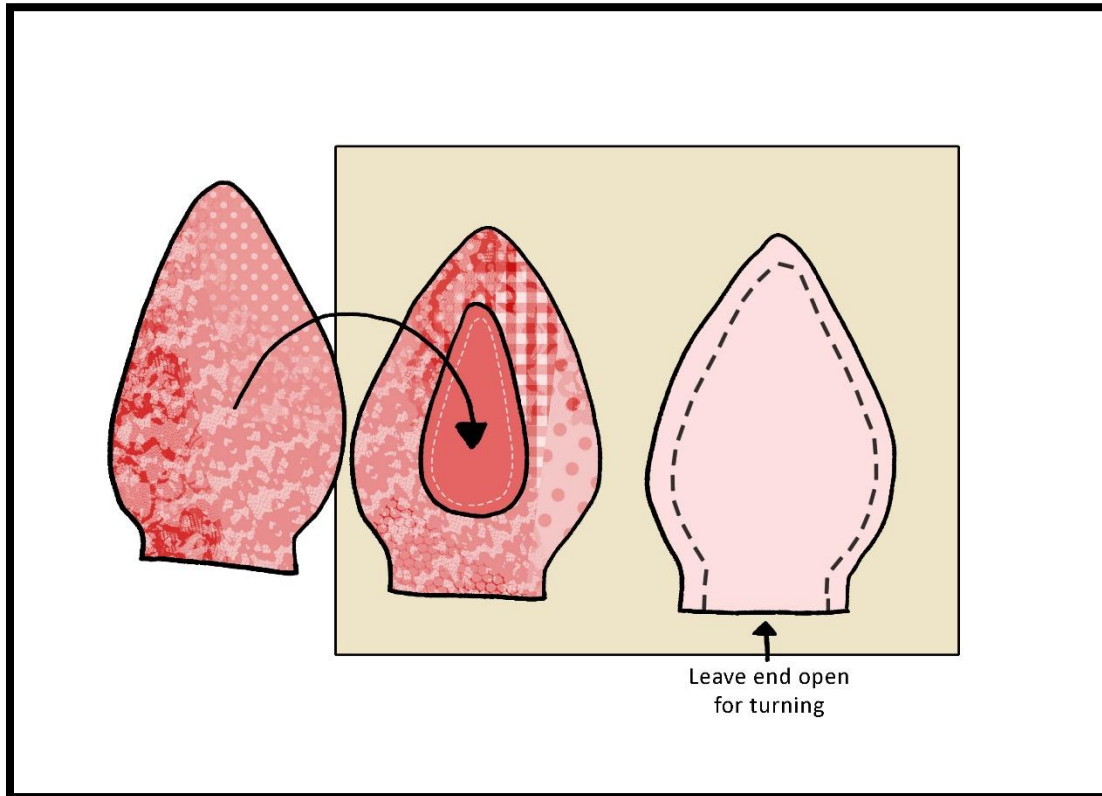


Don't try to make your stitches perfect – in fact, imperfect stitching looks cuter!



Cut out the body front piece and set aside. Cut the ears in a chunk to separate them from the rest of the batting.

Place the ears with right sides together and sew around the edges with a ¼ inch seam allowance. Backstitch at the beginning and end of each seam. Leave the ends open for turning.

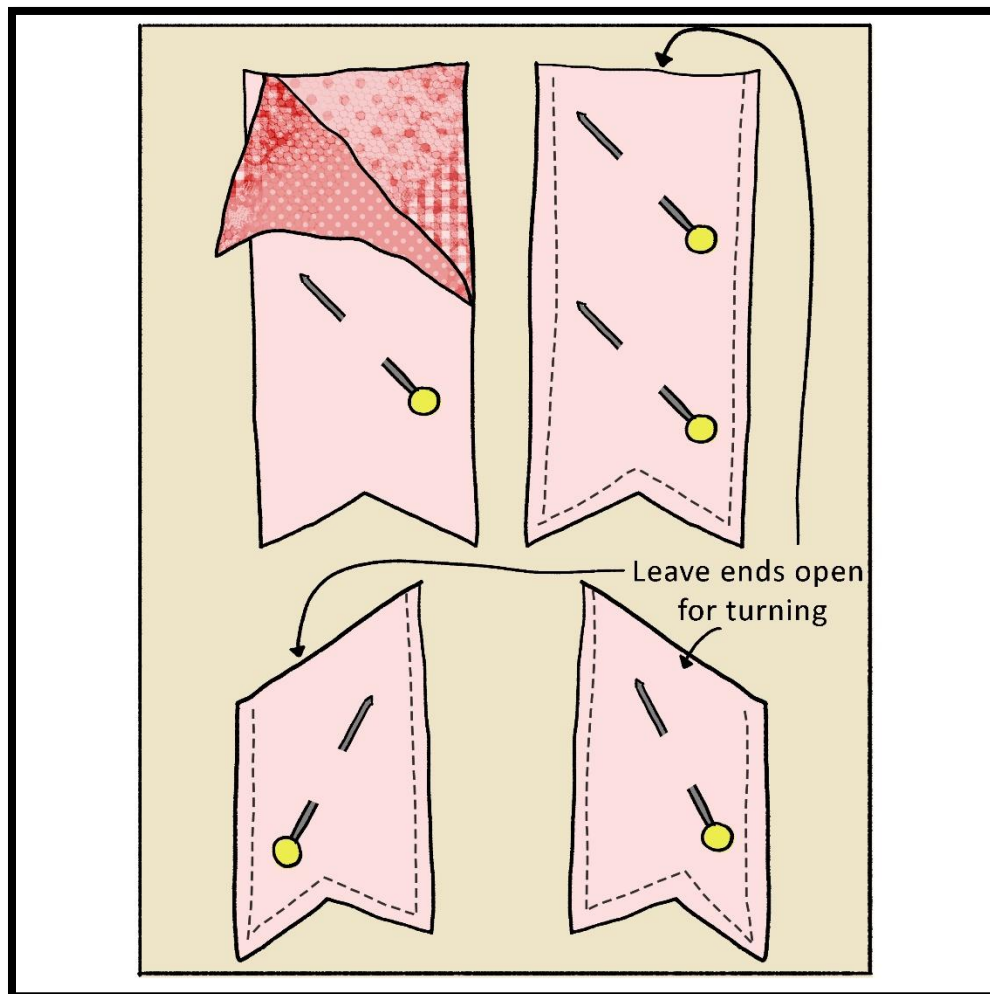


Cut the ears out of the foam and turn them right side out.

A few tips for turning:

- Trim close to the stitching line.
- Use a turning tool.
- Turn between the two fabric pieces – not between the fabric and batting.
- Use a point turning tool, chopstick or skewer to get the tight corners and edges turned all the way out.
- Press well after turning

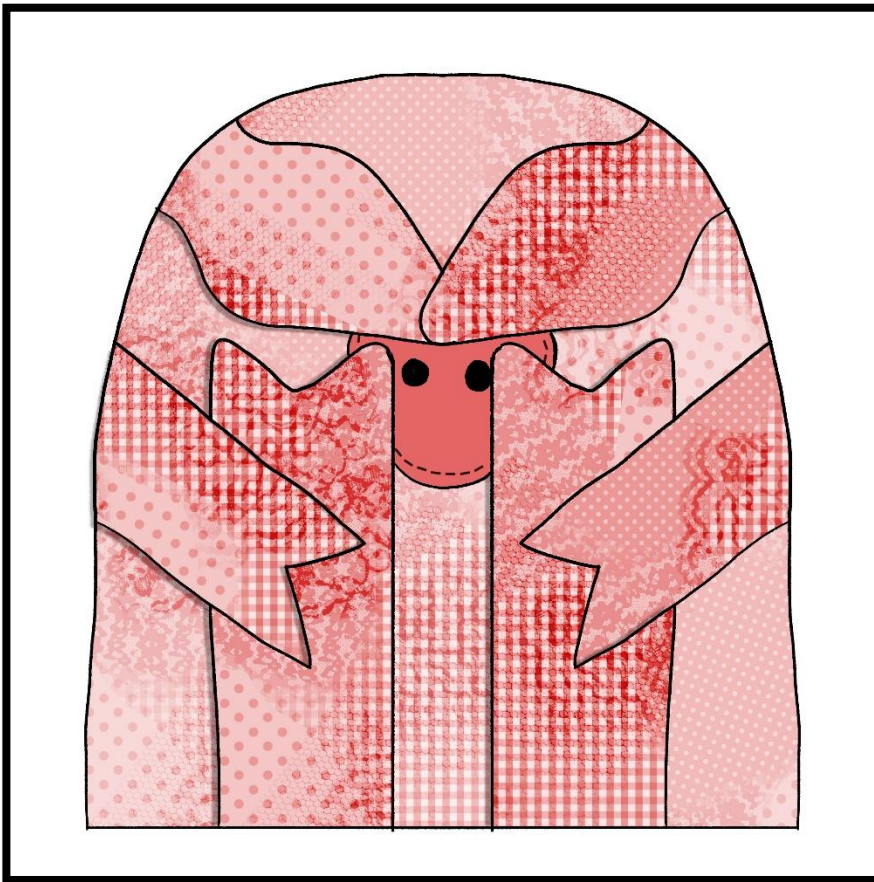
Place the arms and legs onto the batting with right sides together. Sew around each arm and leg with a $\frac{1}{4}$ inch seam allowance. Backstitch at the beginning and end of each seam. Leave the ends open for turning.



Cut the arms and legs out of the batting. Trim the tight corners. Turn the arms and legs right side out. Make sure the points of the hooves get pushed all the way out.

Place the ears, arms, and legs onto the front body piece, as shown below.

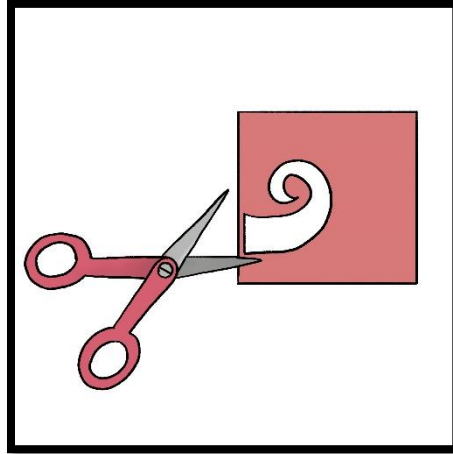
- Use the front pattern piece as a placement guide.
- The inner ears will face down, toward the pig's face.



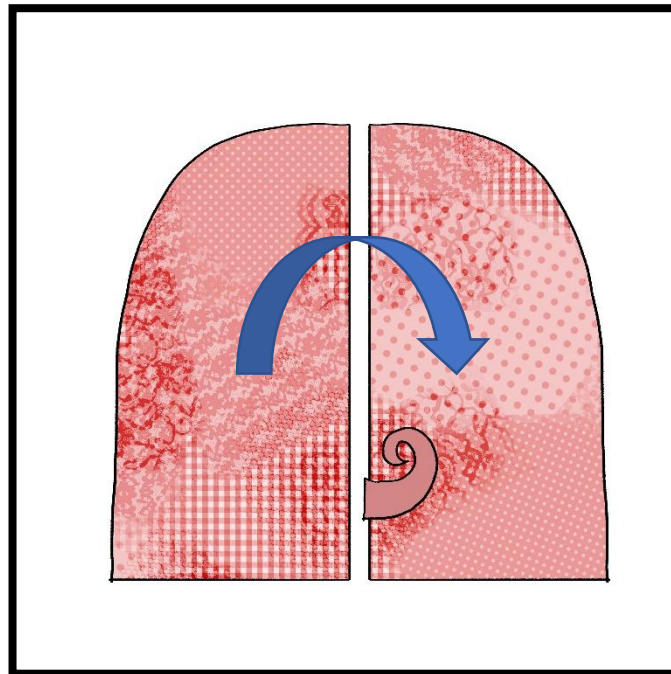
Note: The arms will angle downward.

Baste the arms, legs, and ears to the body front with a $\frac{1}{4}$ inch seam allowance. Set aside.

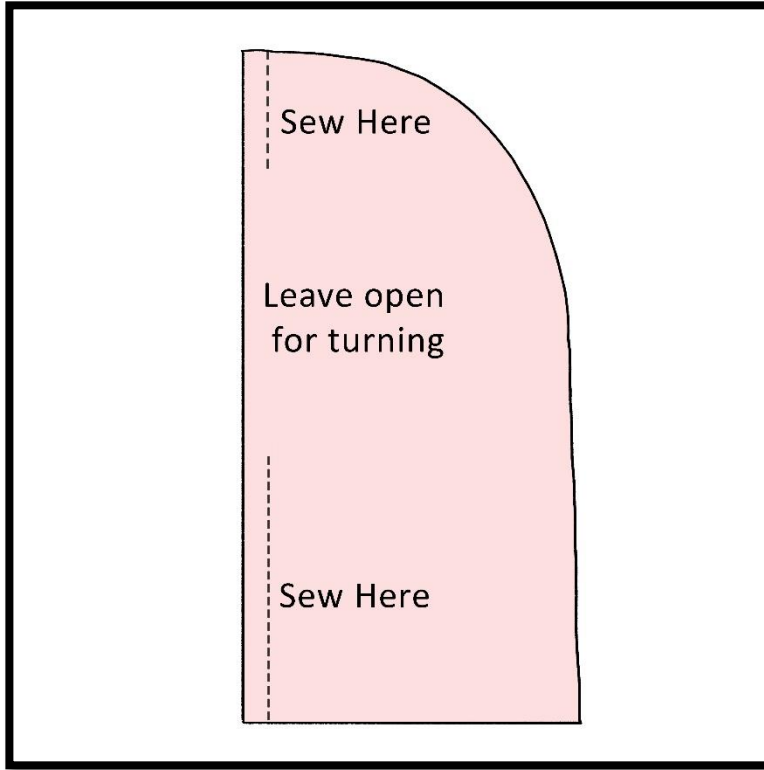
Cut the tail from the piece of felt. Don't worry about getting it cut perfectly. A quirky tail is cuter!



Use the markings on the pattern piece to place the tail between the two Body Back pieces, with right sides together.

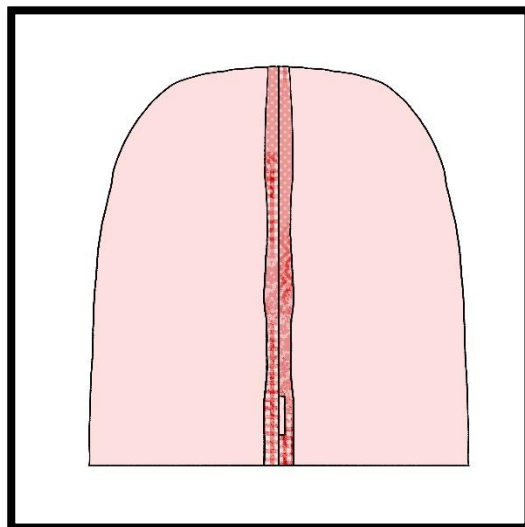


Sew the body back together with a ¼ inch seam allowance. Leave the indicated space open for turning. Backstitch at the beginning and end of each seam.



Be careful not to sew the top of the tail into the seam! Pull it out of the way if necessary.

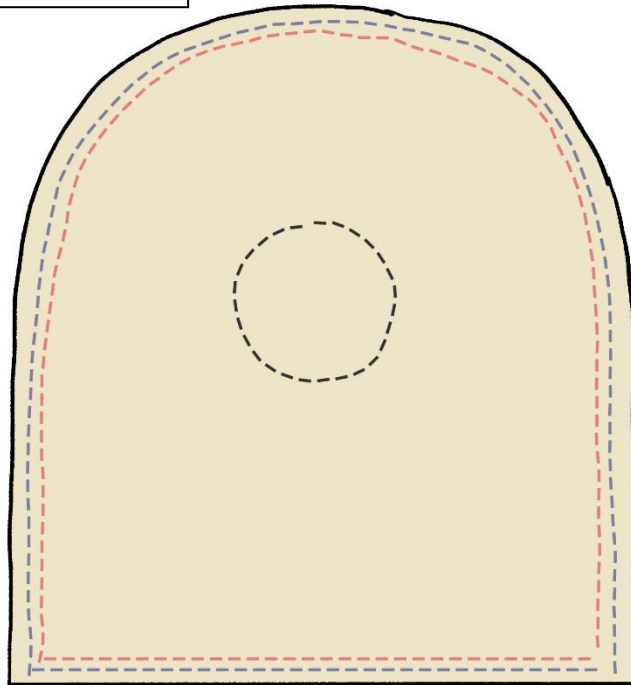
Press the seam open.



Place the body front and body back pieces with right sides together.
Sew all the way around the outside with a 3/8-inch (1 cm) seam allowance.

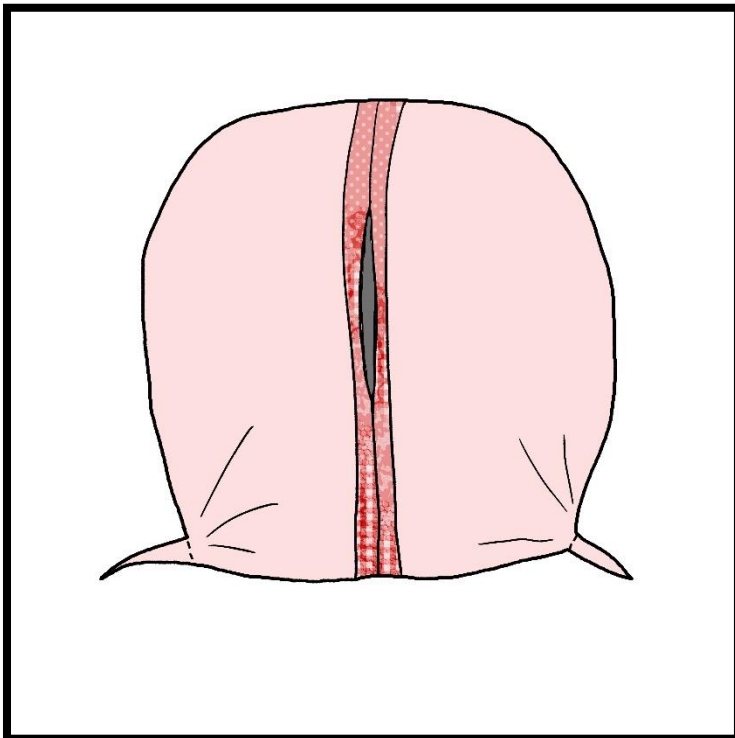
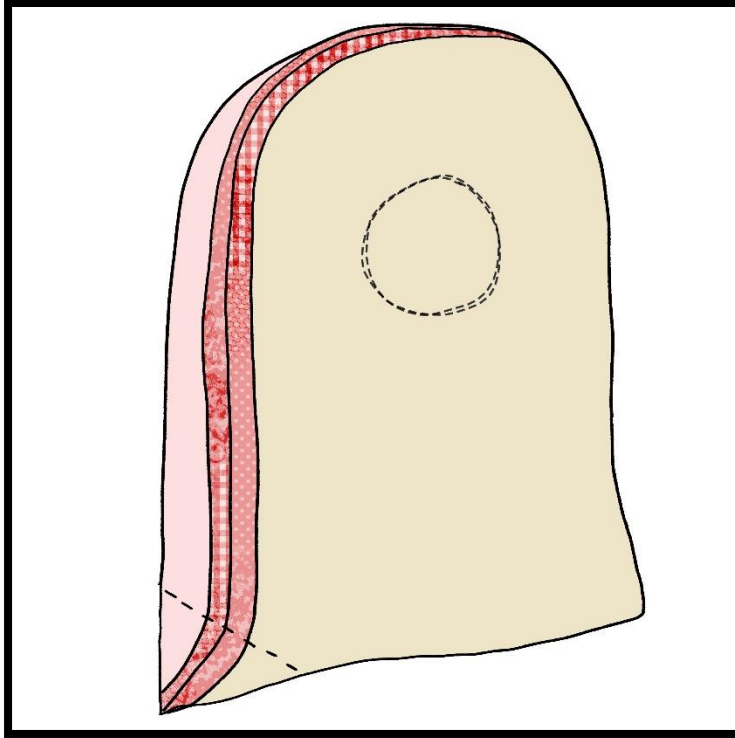
The blue line is the previous basting line.

The red line is the stitching line.

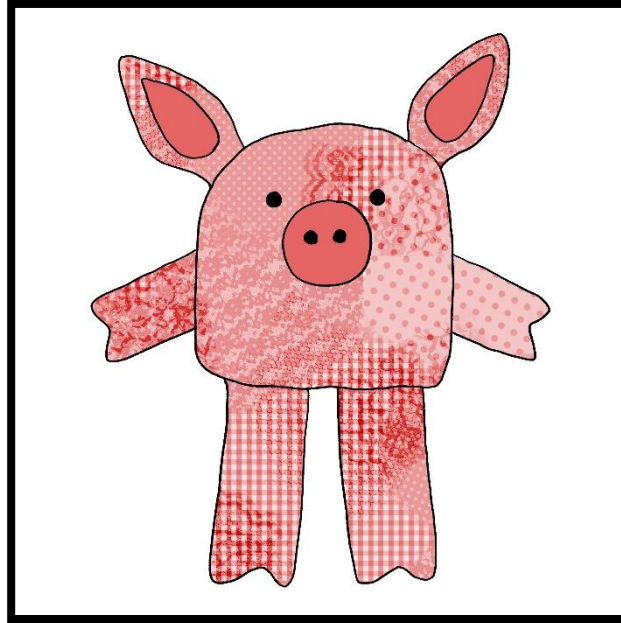


Tip: Sew with the batting side facing up. That way you can see the previous basting stitch line and make sure you are sewing to the inside of it.

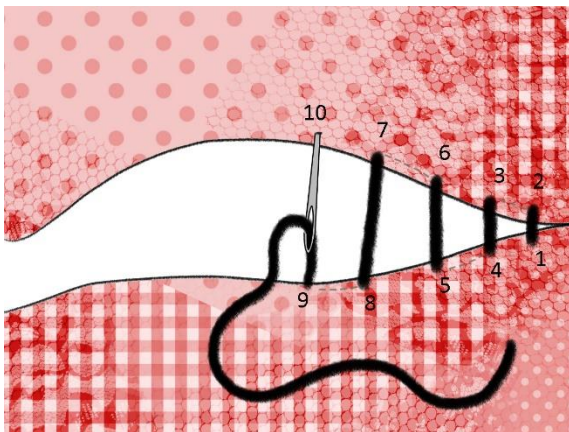
Sew a box bottom. Bring the side seam and bottom seam together and draw a line about $\frac{3}{4}$ " in from the point. Sew along that line. Make sure you don't catch the leg in the seam. Repeat on the other side.



Trim close to the seam allowance and trim off the corners of the box bottom. Turn the pig right side out.



Fill the pig with the stuffing of your choice. Stitch the back opening closed with a ladder stitch using matching thread.



Ladder stitch: Thread a needle and tie a knot in one end. Bring the needle up from the wrong side of the fabric at #1. Go back down through the fabric at #2. Come back up at #3, back down through #4, etc. The dashed lines indicate that the thread is on the wrong side of the fabric. When the gap is closed, pull the stitch tight and tie a knot.

Thank you for downloading this free PDF sewing pattern!

The author, Michelle Goggins, grants a cottage industry use license for this pattern. That means you can sew these items for yourself, give them as gifts, or sell them in your online shops or at craft sales.

The pattern, illustrations, and photos are ©Michelle Goggins with all rights reserved, so please don't sell them, give them away, or take credit for them.

Michelle Goggins is not responsible for any injury or damage that could arise from making this pattern.

Wishing you happy sewing!

For more information and free sewing patterns, please visit

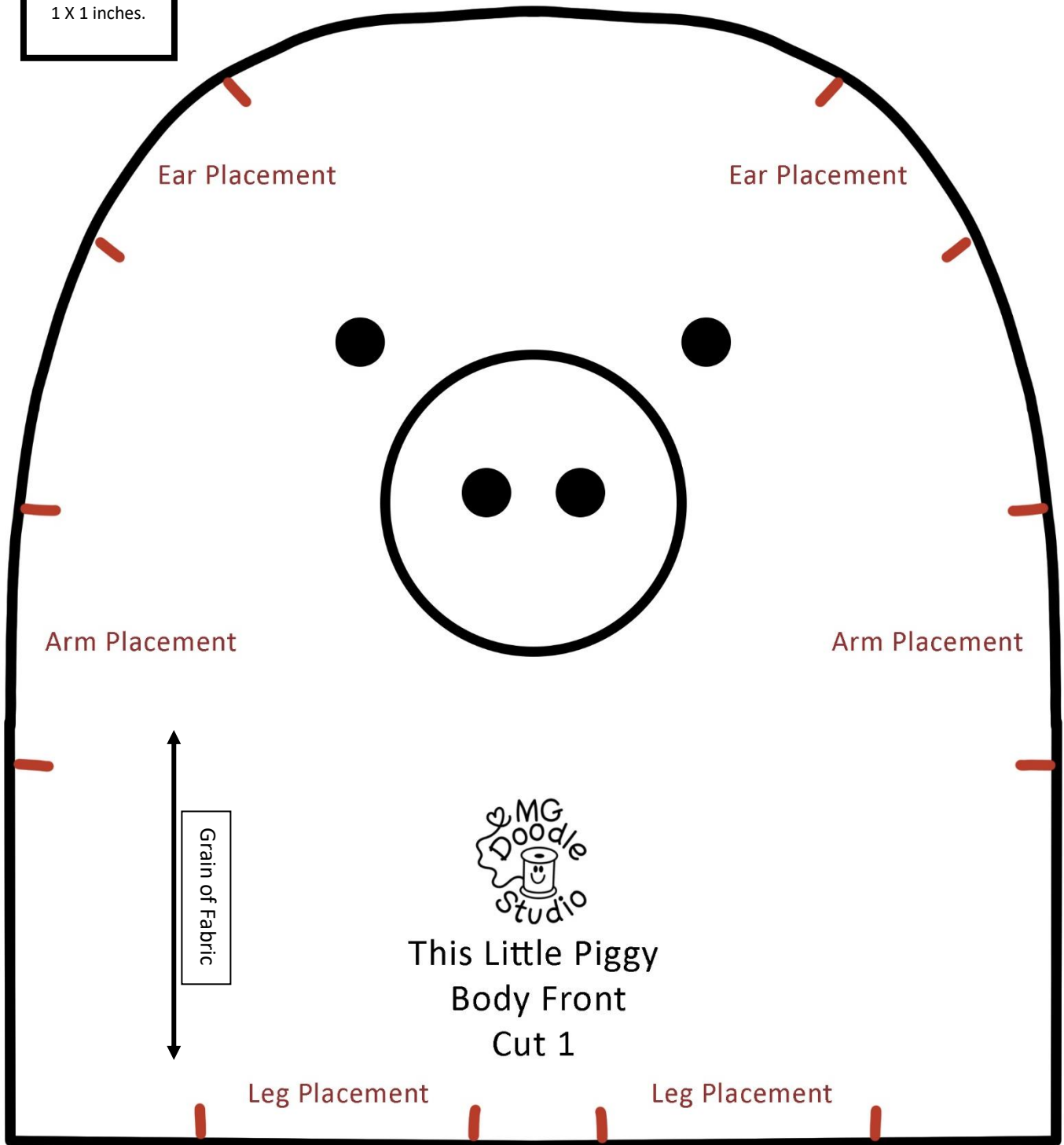
<https://www.mgdoodlestudio.com>



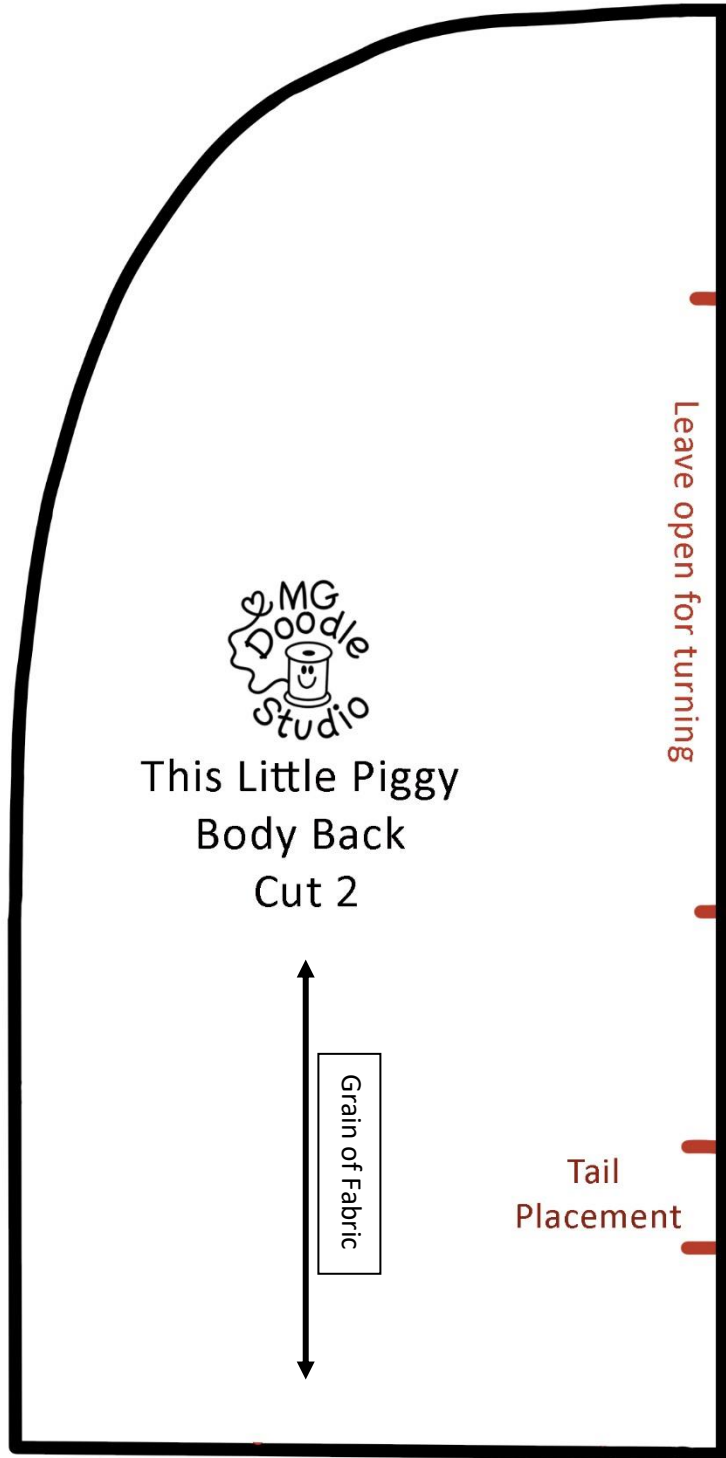
My sewing philosophy:

A pattern is just a guide, and sewists should feel free to make any modifications they desire. There's nothing more delightful than a quirky, hand-sewn character that wasn't made in a factory. Sewing is meant to be fun. Do what makes you happy!

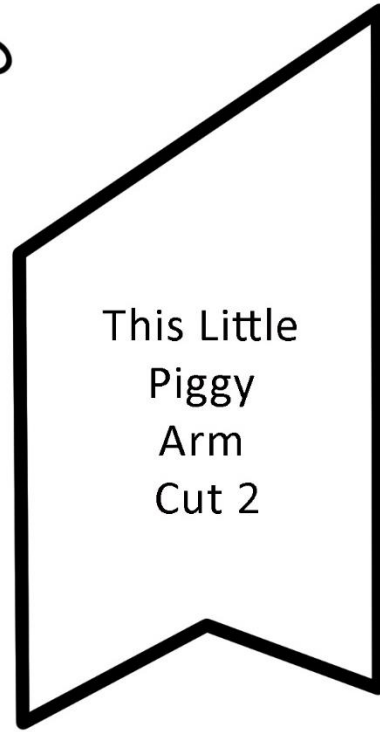
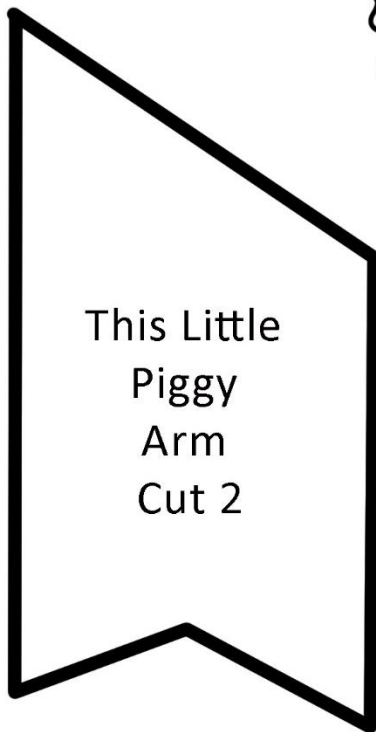
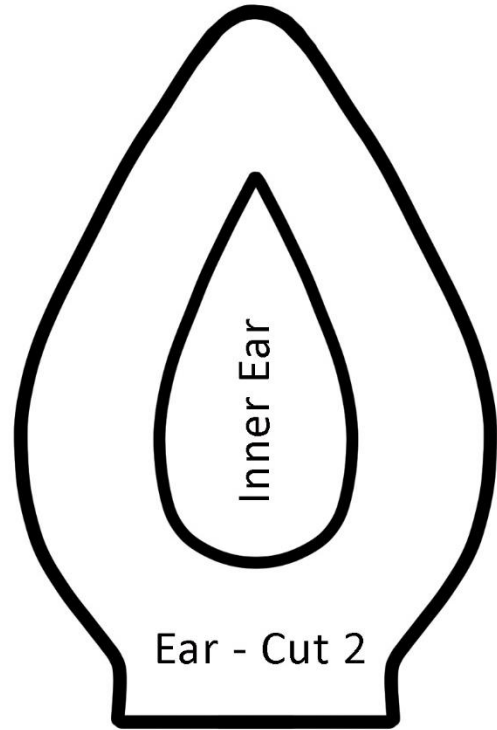
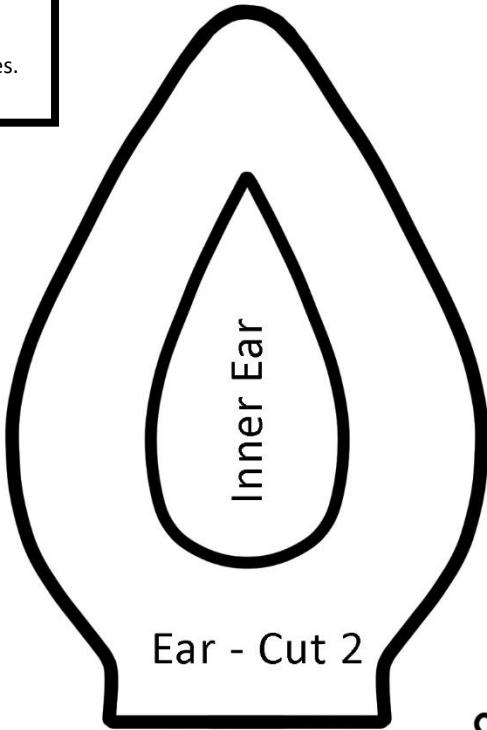
This box should measure 1 X 1 inches.



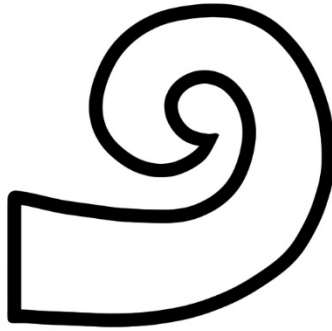
This box
should
measure
1 X 1 inches.



This box
should
measure
1 X 1 inches.



This box
should
measure
1 X 1 inches.



This
Little
Piggy
Tail
cut 1
from
felt

